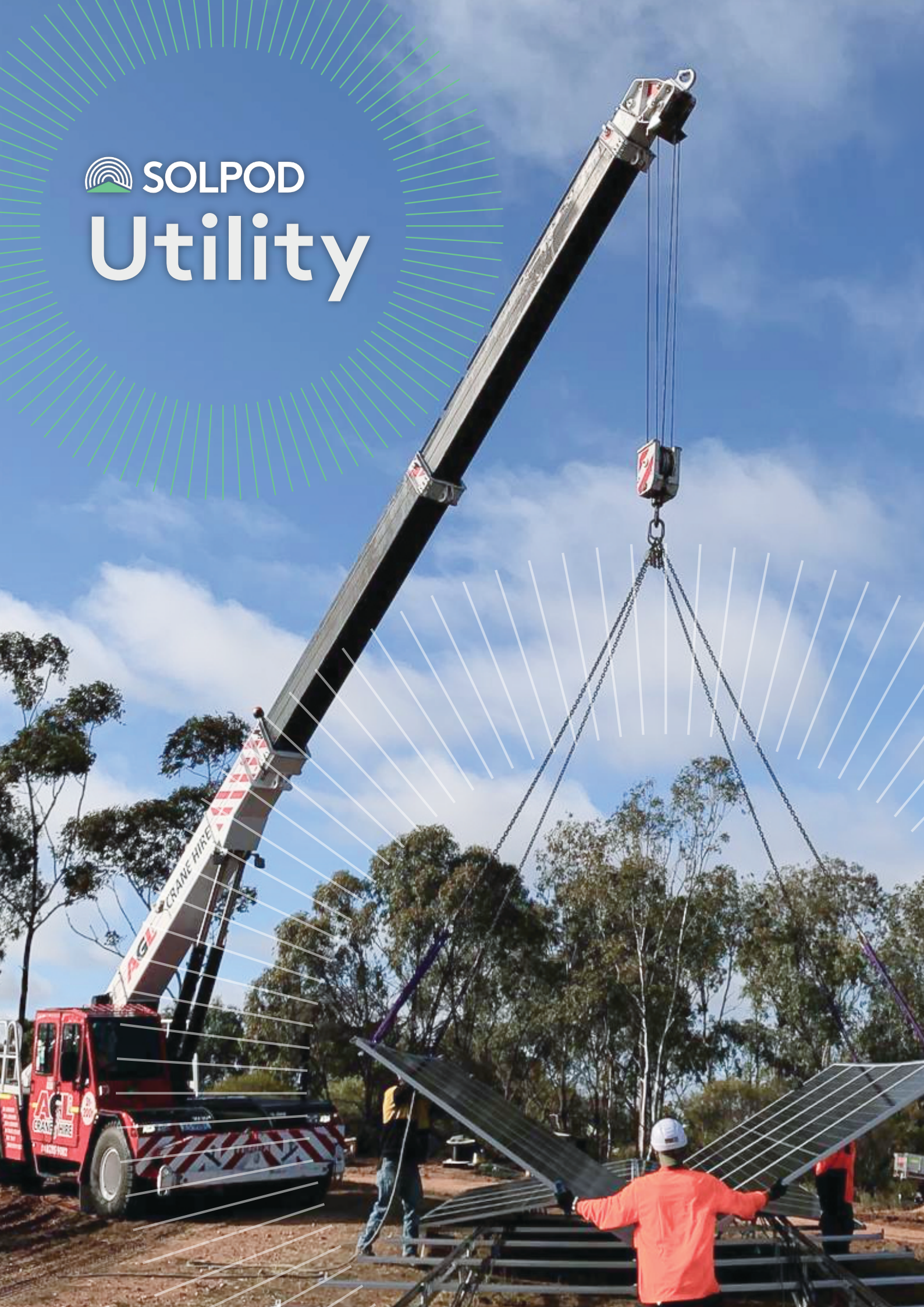


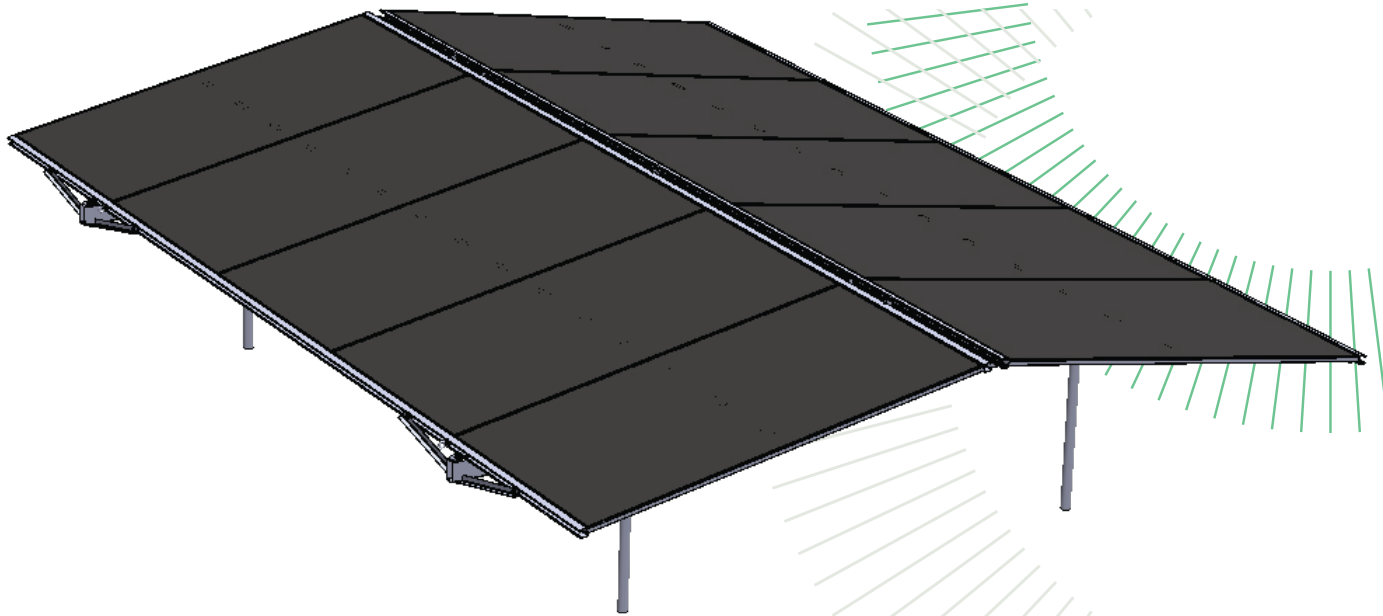


SOLPOD

Utility



Utility



Solpod Utility offers the fastest, lowest risk option for utility scale solar

The flexible configuration of the subframe can accommodate uneven ground with minimal site preparation. Each pod is supported on two cross-beams and four rammed posts. Each post can be re-located if they strike rock, e.g. to the other side of the cross-beam, or up to 200 mm along the cross-beam. As a backup, a rammed post can be replaced with a ballast block.

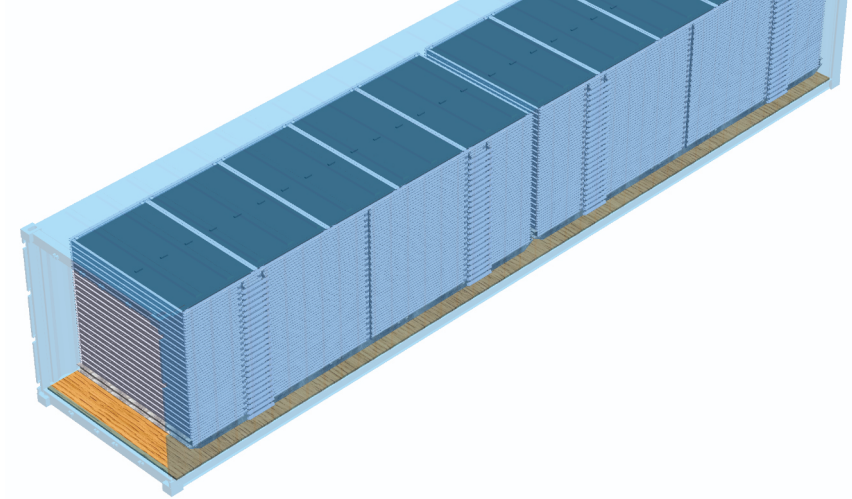
Solar panels are held up off the ground, minimising soiling from wind-blown dust, and eliminating the risk from low level flooding.

Pre-assembled 'pods' mean that solar panels can be lifted into place using a crane - no need to carry, lift and fasten each individual panel - so installation companies can comply with best-practice occupational health and safety.

Solpod's 10-degree dual-tilt design means lower wind loads, so anchors can be smaller, easier, and faster to install.

Containerised

Up to 25 pods (130 kW) are stacked on a single pallet; two pallets (260 kW) are packaged inside a standard 40' container. At the installation site the pallets are pulled out of the container and then positioned around the solar farm, ready for placement.



Containers securely deliver product to site

Crane into place

Pods are lifted into place using any suitable machinery, such as a 30 tonne all wheel drive mobile crane.

Each pod can be picked up and moved without risk of damage to panels or frame.



Crane unfolding a pod onto a subframe

TECHNICAL DATA

General and mechanical

- Tilt: 10-degree back-to-back
- Configuration: 10 modules in each Solpod frame
- Array height: 1 to 1.4 metres
- Dimensions of one Solpod: 5674 × 4400 mm
- Materials: ZAM coated steel beams, hot dip galvanised brackets and fasteners
- Foundations: rammed posts or ballast blocks
- Slope: up to 15% north-south and 15% east-west
- Ground coverage: typically 80-90%
- Wind speed: configurable up to 200 km/h at 10 m, 3-second gust

Electrical

- Modules: JA Solar JAM60D42LB
- Rating of one Solpod: 5.2 kW_p

Service, warranty, and standards

- Frame engineering: professional engineer stamped design package standard
- Foundation engineering: professional engineer stamped design package standard available
- Warranty: 10-year structural, extended warranty available
- Codes and standards: AS/NZS 1170.2:2021 on wind actions

